

# PORTA ROMANA



## Lilburn Wall Light Small

TWL63S | Nickel

Nickel shown with 2 1/2" Empire in Dove Satin

|                                      |  |                                  |
|--------------------------------------|--|----------------------------------|
| HEIGHT<br>260mm   10 1/4"            | CONSTRUCTED FROM<br>Cast brass or nickel plated brass with steel | RECOMMENDED SHADE<br>2.5" Empire |
| HEIGHT WITH SHADE<br>260mm   10 1/4" | WEIGHT<br>0.5 kg   1.1 lbs                                       | MAX WATTAGE<br>25W               |
| WIDTH<br>104mm   4 1/4"              | PROJECTION<br>128mm   5 1/4"                                     | LAMP<br>2 x T-4 G-9 Lamp         |
| WIDTH WITH SHADE<br>104mm   4 1/4"   |  | VOLTAGE<br>120V                  |

### FINISHES

- 1 Gunmetal
- 2 Nickel
- 3 Polished Brass

# Lilburn Wall Light Small

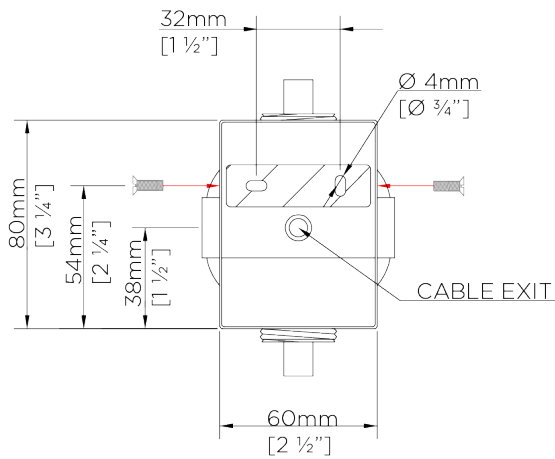
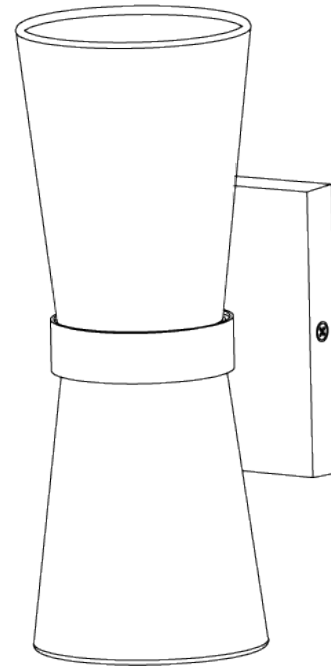
TWL63S

HEIGHT  
260mm | 10 1/4"

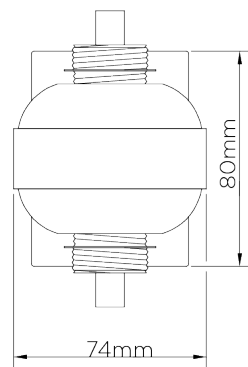
HEIGHT WITH SHADE  
260mm | 10 1/4"

WIDTH  
104mm | 4 1/4"

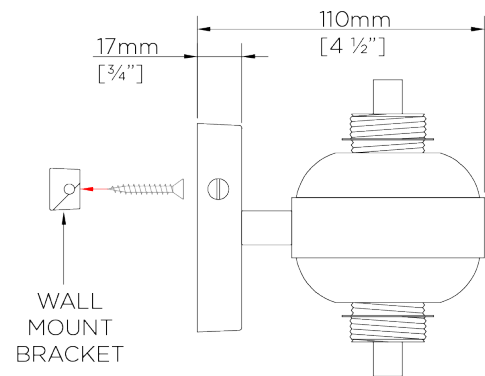
WIDTH WITH SHADE  
104mm | 4 1/4"



BACK



FRONT



SIDE

© Porta Romana 2022

Dimensions and weights are provided as a guide. All Porta Romana Products are made by hand and variations can occur in some products. The products you are buying or marketing are exclusive designs belonging to Porta Romana. Please do not submit design sheets featuring our products to other manufacturing companies nor to other parties who might. Any manufacturer found to be reproducing Porta Romana products will be breaching copyright law and will be actively pursued