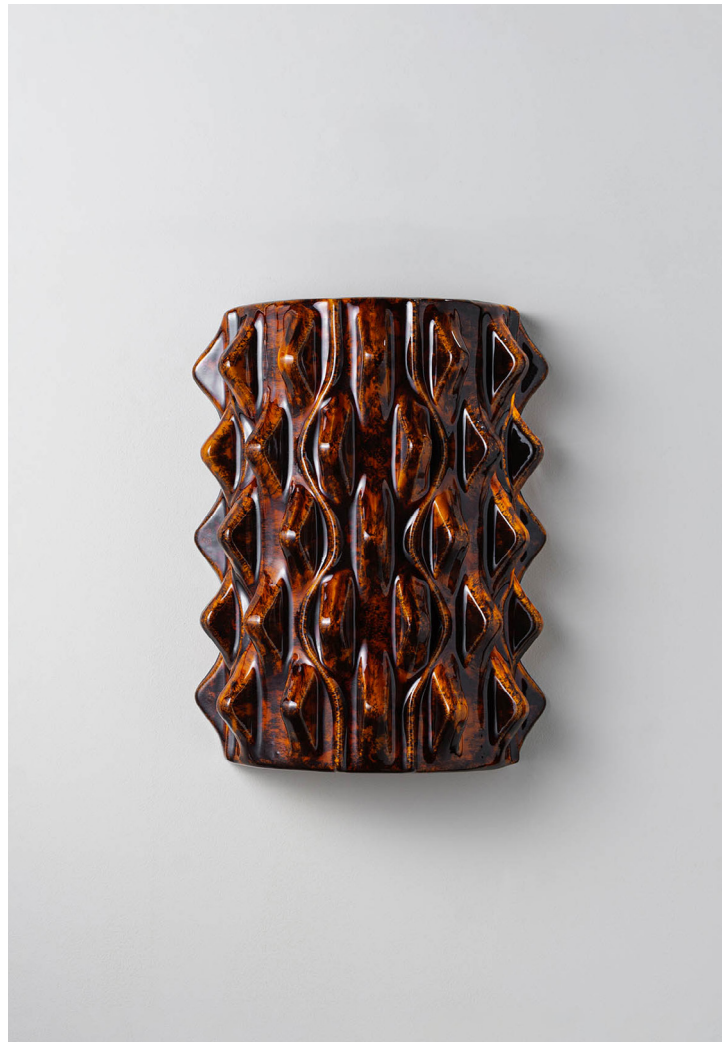


# PORTA ROMANA



## Brae Wall Light

TWL167 | Tigers Eye

Tigers Eye

**HEIGHT**  
370mm | 14 ½"

**CONSTRUCTED FROM**  
Glazed ceramic

**WATTAGE**  
25W

**WIDTH**  
285mm | 11 ¼"

**WEIGHT**  
2.5kg | 5 ¾ lbs

**LAMPING**  
2 x 320lm (3.2w) LED G9 Capsule

**PROJECTION**  
130mm | 5 ¼"

**MATERIAL**  
Glazed ceramic

**VOLTAGE**  
220-240V

**FINISHES**  
Almond  
Pudding  
Tigers Eye



Wall Fixing



Custom

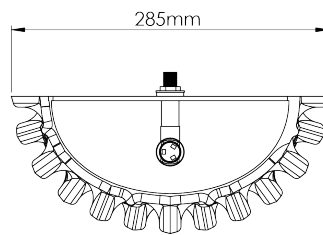
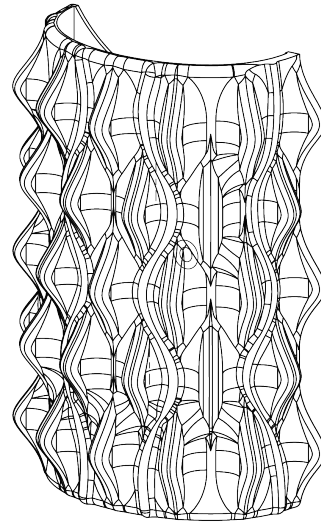
# Brae Wall Light

TWL167

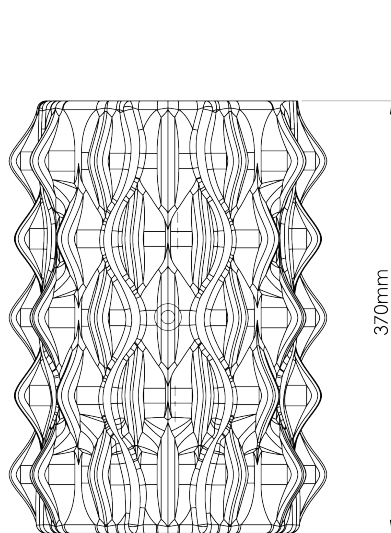
HEIGHT  
370mm | 14 1/2"

WIDTH  
285mm | 11 1/4"

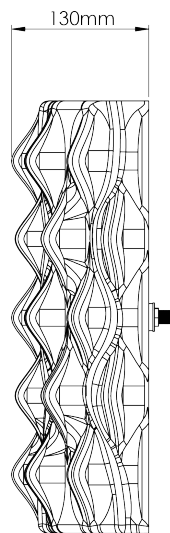
PROJECTION  
130mm | 5 1/4"



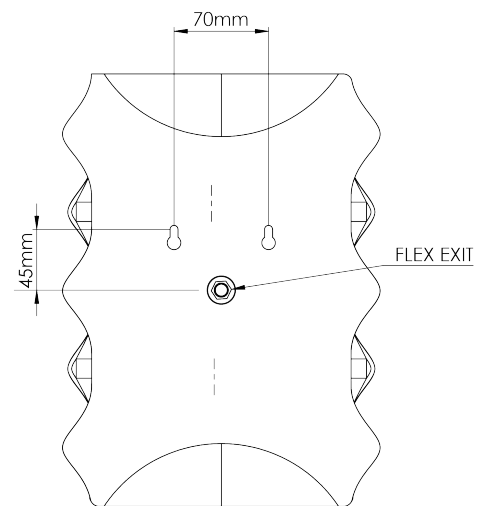
TOP VIEW



FRONT VIEW



RIGHT VIEW



REAR VIEW

© Porta Romana 2025

Dimensions and weights are provided as a guide. All Porta Romana Products are made by hand and variations can occur in some products. The products you are buying or marketing are exclusive designs belonging to Porta Romana. Please do not submit design sheets featuring our products to other manufacturing companies nor to other parties who might. Any manufacturer found to be reproducing Porta Romana products will be breaching copyright law and will be actively pursued

PR

PORTAROMANA.COM